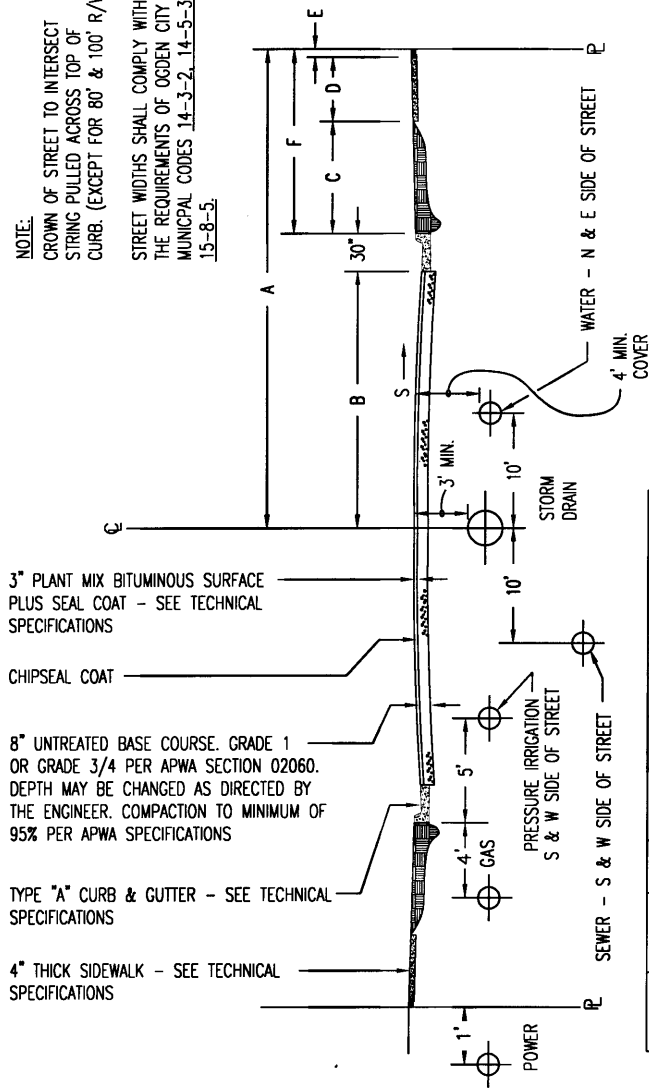


NOTE:
CROWN OF STREET TO INTERSECT
STRING PULLED ACROSS TOP OF
CURB. (EXCEPT FOR 80' & 100' R/W)
STREET WIDTHS SHALL COMPLY WITH
THE REQUIREMENTS OF OGDEN CITY
MUNICIPAL CODES 14-3-2, 14-5-3,
15-8-5.



NOTE:
ROADWAY SECTIONS WITHIN THE
BUSINESS DEPT OGDEN (BDO) VARY.
SEE CITY ENGINEER FOR SPECIFIC DETAILS.

SECTION	WIDTH OF R.O.W.	A	B	C	D	E	F	S
1*	50'	25'	16'	2'-0"	4'-0"	0'-6"	6'-6"	.0210
2**	-	-	18 1/2'	varies	4'-0"	0'-6"	varies	.0180
3***	56'	28'	14'	7'-0"	4'-0"	0'-6"	11'-6"	.0240
4	60'	30'	16'	7'-0"	4'-0"	0'-6"	11'-6"	.0210
5	66'	33'	18'	8'-0"	4'-0"	0'-6"	12'-6"	.0180
6	80'	40'	28'	5'-0"	4'-0"	0'-6"	9'-6"	.0200
7	100'	50'	37'	6'-0"	4'-0"	0'-6"	10'-6"	.0200

* = PRUD - PUBLIC LOCAL STREET
 ** = PRUD - PRIVATE LOCAL STREET (B=16 1/2' FOR ONE WAY TRAFFIC)
 *** = FOR MINOR PUBLIC STREETS ABUTTING RESIDENTIAL ZONED PROPERTIES ONLY.

**OGDEN CITY
ENGINEERING**
9/10/03

Standard Roadway Section

STANDARD PLANS
RD-1
 SHEET 1 OF 1