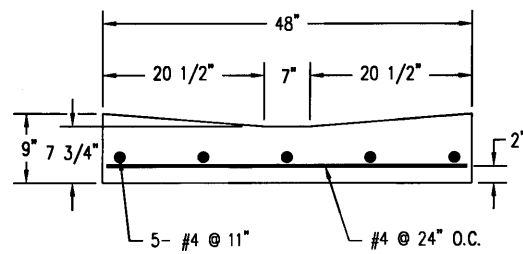


PLAN VIEW
NTS



SECTION A-A
4' WATERWAY NTS

- NOTES:**
1. CONCRETE EDGES: PROVIDE 1/2" RADIUS ON ALL EXPOSED CONCRETE EDGES.
 2. EXPANSION JOINTS: PROVIDE TYPE F1 JOINT FILLER PER SECTION 3060, PLACED FULL DEPTH, WITH TOP SET FLUSH WITH SURFACE OF GUTTER, NO SEALANT IS REQUIRED.
 3. CURING: USE LIQUID MEMBRANE WHITE CHLORINATED RUBBER SUBSTANCE TYPE UNLESS SPECIFIED OTHERWISE.
 4. PROVIDE MINIMUM OF 8" OF COMPACTED GRADE 1 UNTREATED BASE UNDER ALL CONCRETE.
 5. REINFORCING STEEL BARS SHALL CONFORM WITH SECTION 3200 .
 6. PROVIDE A MINIMUM OF 4" COMPACTED ROADBASE BENEATH WATERWAY.

OGDEN CITY ENGINEERING 5/13/02	<h1>Standard 4' Waterway</h1>	STANDARD PLANS <h2>RD-3</h2>
		SHEET 1 OF 1