



Purchasing Division

INVITATION TO BID: Airport Restaurant Remodel

ADDENDUM NO. 1

DATE: July 21, 2021

This addendum is issued to modify the previously issued bid documents and/or given for informational purposes, and is hereby made part of the bid document.

1. Include \$4,000 as an allowance for the building permit fee with Ogden City.
2. Remove requirement for new door & frame in Basement Storage Room 001. Contractor to provide opening as defined in attached revised drawings from Sanders Architects (Refer to Attachment).

INTENTIONALLY LEFT BLANK

ATTACHMENT TO ADDENDUM #1

Project: Ogden Hinckley Airport
Restaurant Remodel - Bickering Sisters

Architect: Sanders Associates Architects
2668 Grant Ave. Suite 100
Ogden, Utah 84401

Owner: Ogden City

Project Architect: M. Shane Sanders, AIA, NCARB

Project Number: 217031

Date: 07.21.2021

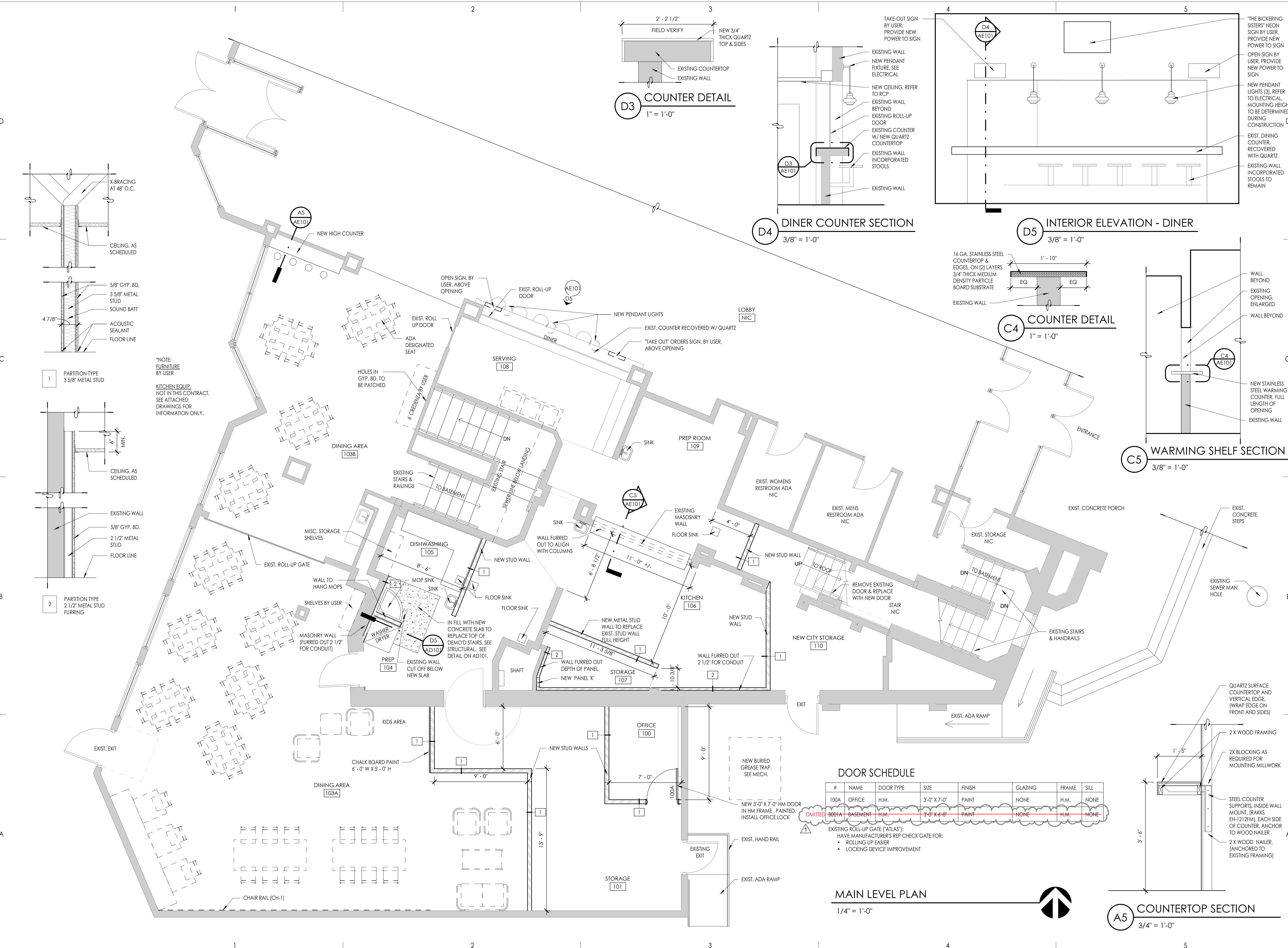


*The following information is intended to amend, alter, expand or clarify the drawings and specifications issued for this project.
All information in this Addendum shall be made part of the contractor's bid.*

ARCHITECTURAL ADDENDUM ITEMS:

- 1. ARCHITECTURAL SHEET AE101 - MAIN FLOOR PLAN:**
 - a. In the Door Schedule, door B001A has been omitted.
- 2. ARCHITECTURAL SHEET AE102 - BASEMENT PLAN:**
 - a. Walls near the stairs have been updated to reflect existing conditions.
 - b. Door B001A has been omitted.
 - c. Remove existing CMU wall from floor to concrete deck to allow access to Storage room 001.

END OF ADDENDUM 1



Consultant

OGDEN HINCKLEY AIRPORT
RESTAURANT REMODEL - BICKERING SISTERS
 3909 AIRPORT RD.,
 OGDEN, UT 84405

Project Name

Issued No.	Date	Description
1	04-02-20	PLAN REVIEW
2	06-10-20	BID SET

Revision

No.	Date	Description
1	07-21-21	ADDENDUM #1

SAA Project No. 217031
 Drawing Title

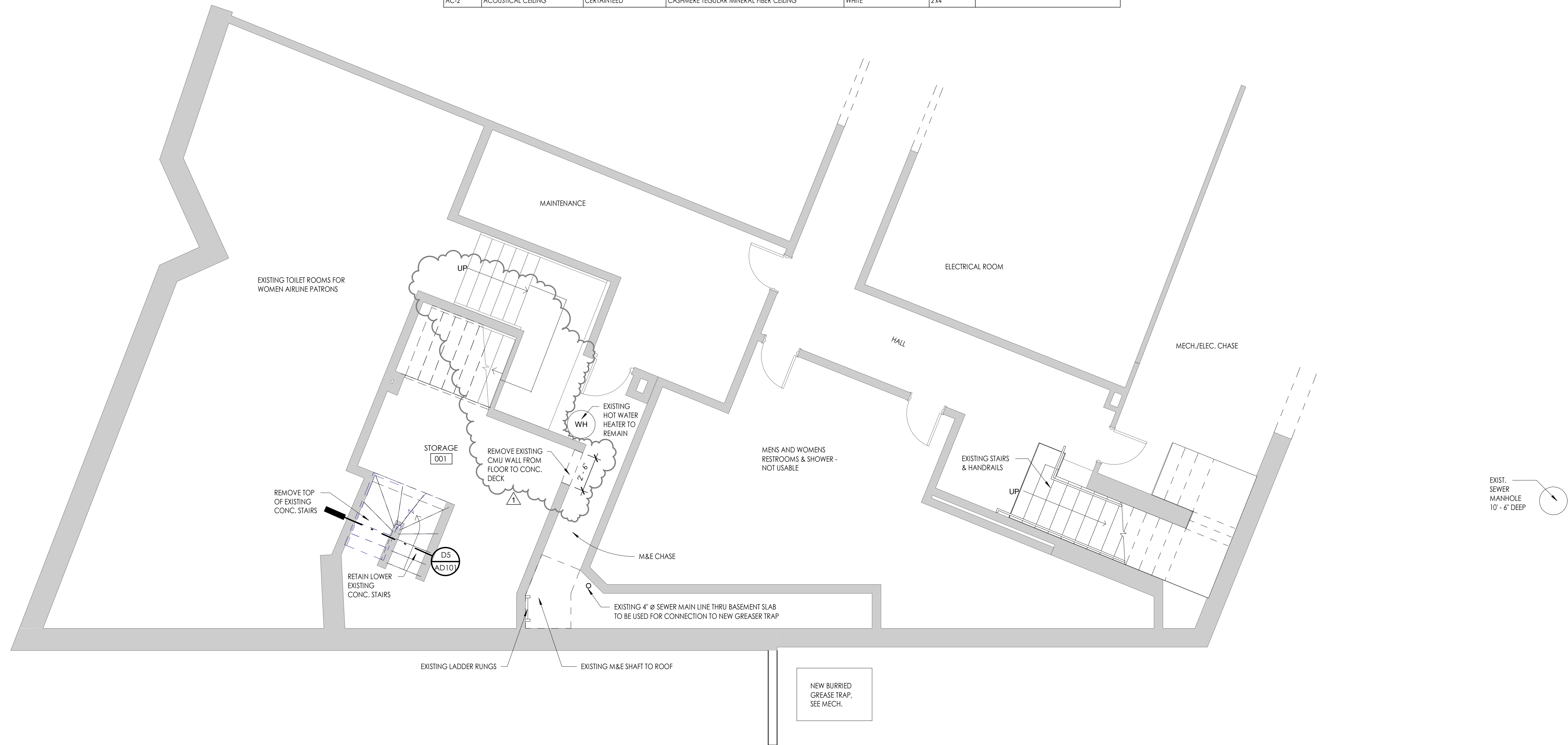
MAIN FLOOR PLAN

Sheet Number

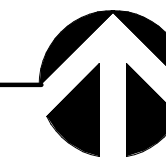
AE101

INTERIOR FINISH LEGEND						
CODE	MATERIAL	MANUFACTURER	PRODUCT	COLOR/FINISH	SIZE	COMMENTS
CONCRETE						
SC-1	INTERIOR CONCRETE SEALER	SHERWIN WILLIAMS	H&C CONCRETE SEALER SOLID COLOR SOLVENT BASED	PEARL GREY		
PSC-1	POLISHED SEALED CONCRETE		SEE SPEC.			
TILE						
T-1	FLOOR TILE	DALTILE	QUARRY TILE	ARID GRAY OQ42 MATTE	6' X 6'	USE G-1
GROUT						
G-1	EPOXY GROUT	MAPEI	FLEXCOLOR CQ	09 GRAY		
BASE						
RB-1	RUBBER BASE	JOHNSONITE	COVE RUBBER BASE	40 BLACK	4"	
TB-1	TILE BASE	DALTILE	QUARRY TILE COVE BASE	ARID GRAY	5' X 6'	USE G-1
PAINT						
PNT-1	PAINT	SHERWIN WILLIAMS		BY USER, EGGSHELL		
PNT-2	PAINT	SHERWIN WILLIAMS		ALABASTER, SEMIGLOSS		
PNT-3	CHALKBOARD PAINT	KRYLON		BLACK		
WALL PROTECTION						
FRP-1	WALL PROTECTION		FRP PANEL	WHITE SMOOTH		8' HIGH
CH-1	CHAIR RAIL	JOHNSONITE	RAMPART CHAIR RAIL	68 WHITE SAND	4"	INSTALL HEIGHT TO BE DETERMINED BY USER
SS-1	STAINLESS STEEL (NIC)		PROVIDED BY BINTZ			
QUARTZ						
Q-1	QUARTZ	DALTILE	QUARTZ	EQUINOX OQ23	3/4" THICK	
ACOUSTIC CEILING						
AC-1	ACOUSTICAL CEILING	CERTAINTED	CASHMERE TEGULAR MINERAL FIBER CEILING	WHITE	2'x2'	
AC-2	ACOUSTICAL CEILING	CERTAINTED	CASHMERE TEGULAR MINERAL FIBER CEILING	WHITE	2'x4'	

ROOM FINISH SCHEDULE										
NO.	NAME	FLOOR	BASE FINISH	NORTH WALL	SOUTH WALL	EAST WALL	WEST WALL	CEILING	CASEWORK COUNTER	NO.
100	OFFICE	SC-1	RB-1	PNT-2	PNT-2	PNT-2	PNT-2	AC-1	-	100
101	STORAGE	SC-1	RB-1	PNT-2	PNT-2	PNT-2	PNT-2	AC-1	-	101
103A	DINING AREA	PSC-1	RB-1	PNT-1	PNT-1 / CH-1	PNT-1 / PNT-3	PNT-1	AC-1	-	103A
103B	DINING AREA	PSC-1	RB-1	PNT-1	PNT-1	PNT-1	PNT-1	AC-1 / EXISTING	-	103B
104	PREP	T-1	TB-1	FRP-1 / PNT-2	FRP-1 / PNT-2	FRP-1 / PNT-2	FRP-1 / PNT-2	PNT-2	-	104
105	DISHWASHING	T-1	TB-1	FRP-1 / PNT-2	-	FRP-1 / PNT-2	FRP-1 / PNT-2	PNT-2	-	105
106	KITCHEN	T-1	TB-1	FRP-1 / PNT-2	SS-1 / FRP-1 / PNT-2	FRP-1 / PNT-2	FRP-1 / PNT-2	AC-2	-	106
107	STORAGE	T-1	TB-1	FRP-1 / PNT-2	FRP-1 / PNT-2	-	FRP-1 / PNT-2	AC-2	-	107
108	SERVING	T-1	TB-1	PNT-2	PNT-2	PNT-2	PNT-2	AC-2	Q-1	108
109	PREP ROOM	T-1	TB-1	FRP-1 / PNT-2	FRP-1 / PNT-2	FRP-1 / PNT-2	FRP-1 / PNT-2	AC-2	-	109
110	NEW CITY STORAGE	SC-1	RB-1	PNT-2	PNT-2	PNT-2	PNT-2	-	-	110



BASEMENT PLAN
1/4" = 1'-0"



SANDERS ASSOCIATES ARCHITECTS
2668 Grant Avenue
Ogden, UT 84401
801.621.7303
www.sandersarch.com



Consultant

OGDEN HINCKLEY AIRPORT
RESTAURANT REMODEL - BICKERING SISTERS
3909 AIRPORT RD.
OGDEN, UT 84405

Project Name

Issued	No.	Date	Description
	1	04-02-20	PLAN REVIEW
	2	06-10-20	BID SET

Revision	No.	Date	Description
	1	07-21-21	ADDENDUM #1

SAA Project No. 217031
Drawing Title

BASEMENT PLAN

Sheet Number

AE102