

**DOCUMENT 00 90 10**  
**ADDENDUM No. 1**

**PART 1 GENERAL**

**1.1 DOCUMENT INCLUDES**

- A. Changes to the Bid Documents.

**1.2 CONSTRUCTION CONTRACT**

- A. The Construction Contract is known as Ogden City 2018 Traffic Signal Upgrades.
- B. Date of this Addendum: November 19<sup>th</sup>, 2018

**PART 2 CHANGES**

**2.1 CHANGES TO PRIOR ADDENDA**

- A. None

**2.2 CHANGES TO BIDDING REQUIREMENTS**

- A. Document 00 10 00 (Invitation to Bid) – Changes have been made to modify the bid opening date as follows:

**1.1 BID LOCATION AND OPENING**

A. Sealed bids for furnishing all materials, labor, tools and equipment necessary to complete said work must be submitted on forms prepared by the City Engineer and are to be submitted to the office of the City Purchasing Agent, 2549 Washington Boulevard, 2<sup>nd</sup> floor, Ogden, Utah, until 1:30 p.m., Thursday, November 29<sup>th</sup>, 2018 at which time they will be opened and read aloud. **LATE BIDS WILL NOT BE ACCEPTED.**

- B. Document 00 20 00 (Instructions to Bidders) – Changes have been made to modify the question and addenda deadline and are as follows:

**2.1 INTERPRETATIONS AND ADDENDA**

B. No oral interpretations shall be made to any Bidder. Owner will not be responsible for or bound by any statements, explanations, representations, conclusions, assumptions or interpretations made by any party, whether oral or written, except those duly issued in the form of written Addenda. Requests for information or clarifications which do not require interpretation or result in the subsequent issuance of addenda will be addressed to the Engineer no later than 72 hours (3 days) prior to the opening of Bids. This means that the last day for questions is Monday, November 26<sup>th</sup> at 1:30 PM.

D. Except to postpone the Bid opening, no Addenda shall be issued within 48 hours of the Bid opening. This means that the last day for Addenda is Tuesday, November 27<sup>th</sup> at 1:30 PM.

C. Document 00 41 10 (Bid Schedule) – Changes have been made to the bid schedule and measurement and payment to include specifications regarding landscape restoration and concrete flatwork removal. (Bid Items No. 12 and 18). The Powder Coat Pedestrian Pole (Bid Item No. 20) is added to the bid. The updated Bid Schedule and Measurement and Payment is as follows:

**BID SCHEDULE No. A-1**

**Ogden City 2018 Traffic Signal Upgrades**

BID	DESCRIPTION	BID	BID	UNIT	CONTRACT
ITEM		UNIT	QUANTITY	PRICE	AMOUNT
1	MOBILIZATION	LUMP	1		
2	TRAFFIC CONTROL	LUMP	1		
3	2" CONDUIT, TRENCHED	LF	70		
4	RADAR SENSOR	EACH	15		
5	RADAR HOME RUN CABLE	LF	1870		
6	ASTRO-BRAC ONLY	EACH	2		
7	TYPE-1 SIGNAL HEAD	EACH	66		
8	TYPE-4 SIGNAL HEAD	EACH	2		
9	7-CONDUCTOR CABLE	LF	1380		
10	MAST ARM SIGN	EACH	8		
11	6" CONCRETE FLAT WORK	SF	85		
12	REMOVE CONCRETE	SF	70		
13	CROSSWALK STRIPING	LUMP	2		
14	RELOCATE PED EQUIPMENT	EACH	14		
15	PED POLE AND FOUNDATION	EACH	4		
16	FULL PED HEAD ASSEMBLY	EACH	32		
17	4-CONDUCTOR CABLE	LF	1030		
18	RESTORE LANDSCAPING	LS	1		
19	FLOW FILL	CY	1		
20	POWDER COAT PEDESTRIAN POLE	EACH	1		

Base Bid Schedule No. A-1 Total = \$ \_\_\_\_\_

Schedule Total in Words \_\_\_\_\_

Signature \_\_\_\_\_

## **PART 3 MEASUREMENTS AND PAYMENT**

### **3.1 GENERAL**

- A. See measurement and payment procedures in APWA Section 01 29 00.
- B. ENGINEER will take all measurements and compute all quantities.
- C. CONTRACTOR will verify measurement and quantities.
- D. CONTRACTOR will provide all equipment, workers, and survey crews to assist ENGINEER in making measurements.
- E. All bid items denoted as “State Furnished” are to be purchased by the OWNER, and installed by the CONTRACTOR.
- F. Units of measurement are listed above in the bid schedule(s).

### **3.2 MOBILIZATION, Bid Item No. 1**

- A. Measured by lump sum.
- B. Payment covers cost of mobilization, demobilization, installation of temporary facilities and bringing all necessary construction equipment to the site. Payment will be made on a percentage basis as follows.

Percent of Original Contract Amount Earned	Percent of Amount Bid for Mobilization to be Paid
25	40
35	20
45	30
60	10

### **3.3 TRAFFIC CONTROL, Bid Item No. 2**

- A. Measured by lump sum.
- B. Payment covers the cost of mobilization, demobilization, installation of temporary traffic control measures to the site. Payment will be made on a percentage basis as follows.

Percent of Original Contract Amount Earned	Percent of Amount Bid for Mobilization to be Paid
25	40
35	20
45	30
60	10

- C. Payment includes all costs incidental to traffic control as specified in document 01 55 26.

### **3.4 2” CONDUIT, TRENCHED, Bid Item No. 3**

- A. Measured by linear foot.
- B. Payment covers pickup and transportation of all material and equipment to and from the

construction site(s), and all materials, tools, equipment and labor required to excavate, install, and restore the area to its previous condition.

- C. This item requires installation at depths consistent with UDOT standards.
- D. Payment includes removal and disposal of any spoils resulting from excavation or installation.
- E. Payment includes pull-tape as required by UDOT standards.
- F. Payment includes all box entries and restoration of box integrity as required by UDOT standards.

### **3.5 RADAR SENSOR, Bid Item No. 4**

- A. Measured by each.
- B. State furnished item, to be installed by the contractor.
- C. Payment includes loading, coordination and delivery to site all state furnished materials, and testing of equipment to verify it is operating correctly.
- D. Payment includes all materials, tools, equipment and labor required to install a stop-bar radar detection unit on existing signal steel, including all necessary parts and mounting hardware, in accordance with UDOT standards and located as shown in the project plans. Includes re-aiming the sensor, if necessary, with the integrator. Includes relocating of the sensor along the same arm if not initially placed in a position to see all approach lanes.
- E. Payment includes splicing of the home-run cable and the radar pigtail at the pole junction box, using an approved epoxy splice kit per UDOT standard.
- F. Payment includes mounting and connections to the interface device in the signal cabinet.

### **3.6 RADAR HOME-RUN CABLE, Bid Item No. 5**

- A. Measured by linear foot.
- B. Payment covers pickup and transportation of all material and equipment to and from the construction site(s).
- C. Payment includes all materials, tools, equipment and labor required to install home run cable from the pole box to the signal cabinet through existing conduit and boxes, in accordance with UDOT standards.
- D. Home-run cable is to be identical in every way (size, sheathing, strand coloring, etc.) to the 6-wire material used by UDOT for their radar detection equipment.
- E. Requires 6' of slack to be left in the signal cabinet for termination.
- F. Payment includes separate ground-wire from each sensor to the signal cabinet, sized and installed per UDOT standard specifications. Ground wires may be spliced at pole boxes to minimize the number of returns.
- G. No additional time or money will be allowed or allotted for difficult cable pulls.

### **3.7 ASTRO-BRAC ONLY, Bid Item No. 6**

- A. Measured by each.
- B. State furnished item, to be installed by the contractor.
- C. Payment includes loading, coordination and delivery to site all state furnished materials, and testing of equipment to verify it is operating correctly.
- D. Payment includes assembly of the astro-brac and attachment to the old signal head, and

removal off the old gooseneck or astro-brac mount.

- E. Payment includes all materials, tools, equipment and labor required to remove an existing signal head and re-install on a new astro-brac mount, in accordance with UDOT standards.
- F. Payment includes additional 7-conductor length, as required.
- G. Payment includes relocation of the signal head along the same mast arm to match project specifications, including drilling a new hole, cutting off the existing arm nipple, and plugging the old hole.
- H. Includes any relocation of existing signs or devices as needed.

### **3.8 TYPE-1 SIGNAL HEAD, Bid Item No. 7**

- A. Measured by each.
- B. State furnished item, to be installed by the contractor.
- C. Payment includes loading, coordination and delivery to site all state furnished materials, and testing of equipment to verify it is operating correctly.
- D. Payment includes all assembly of the type-1 signal head, mount, and LED's. Includes all materials, tools, equipment and labor required to install the head to an existing arm.
- E. Payment includes relocation of the type-1 signal head along the same mast arm to match project specifications, including drilling a new hole, cutting off the existing arm nipple, and plugging the old hole.
- F. Includes any relocation of existing signs or devices as needed.
- G. Includes removal, transport, and disposal of existing signal heads and mounts.
- H. Payment includes additional 7-conductor length, as required.
- I. Payment includes all wiring at the signal head and cabinet required to make the new signal head fully operational.

### **3.9 TYPE-4 SIGNAL HEAD, Bid Item No. 8**

- A. Measured by each.
- B. State furnished item, to be installed by the contractor. Payment includes pickup and transportation of all material and equipment to and from the construction site(s).
- C. Payment includes loading, coordination and delivery to site all state furnished materials, and testing of equipment to verify it is operating correctly.
- D. Payment includes all assembly of the type-4 signal head, mount, and LED's. Includes all materials, tools, equipment and labor required to install the head to an existing arm.
- E. Payment includes relocation of the type-4 signal head along the same mast arm to match project specifications, including drilling a new hole, cutting off the existing arm nipple, and plugging the old hole.
- F. Includes any relocation of existing signs or devices as needed.
- G. Includes removal, transport, and disposal of existing signal heads and mounts.
- H. Payment includes additional 7-conductor length, as required.
- I. Payment includes all wiring at the signal head and cabinet required to make the new signal head fully operational.

**3.10 7-CONDUCTOR CABLE, Bid Item No. 9**

- A. Measured by linear foot.
- B. Payment includes pickup and transportation of all material and equipment to and from the construction site(s).
- C. Payment includes all materials, tools, equipment and labor required to install new 7-conductor signal cable, meeting IMSA 20-1 standards, in existing conduit, boxes and signal steel.
- D. Payment includes cable termination at the device and in the cabinet, as well as adequate slack in the cabinet, boxes and mast arm.
- E. No additional time or money will be allowed or allotted for difficult cable pulls.

**3.11 MAST ARM SIGN, Bid Item No. 10**

- A. Measured by each.
- B. Payment includes pickup and transportation of all material and equipment to and from the construction site(s).
- C. Payment includes procurement of a “mock-up” plan of the signs to be constructed, to be approved by the engineer before construction.
- D. New signs to be constructed as shown on the mock-up, and built to meet current UDOT and MUTCD standards.
- E. Payment includes all materials, tools, equipment and labor required to install the signs on existing signal steel according to UDOT standards.
- F. Payment includes removal and disposal of old existing signs and mounting material, if present.

**3.12 6” CONCRETE FLAT WORK, Bid Item No. 11**

- A. Measured by square foot.
- B. Payment includes pickup and transportation of all material and equipment to and from the construction site(s).
- C. Payment includes all costs, short-load fees, etc. associated with obtaining concrete.
- D. Payment includes all materials, tools, testing, equipment, labor, and any additional supplies required to excavate, frame, pour, finish and test the new concrete flat work. Includes any new untreated base course installed underneath the new concrete flat work.
- E. Payment includes removal and disposal of any excess material from construction.  
Payment includes restoration of the surrounding landscape/pavement to its previous

### **3.13 REMOVE CONCRETE, Bid Item No. 12**

- A. Measured by square foot.
- B. Payment includes pickup and transportation of all material and equipment to and from the construction site(s).
- C. Payment includes all materials, tools, equipment, labor, and any additional supplies required to saw cut, excavate, load, transport and dispose of all removed materials.
- D. Payment covers removal of any curb and gutter as well as flat-work pavement.
- E. Payment includes restoration of the surrounding landscaping or pavement to its previous condition. If new concrete flatwork cannot be poured into the excavated area within the same working day, contractor will be responsible for filling the excavated area with suitable backfill up to finish grade, as directed by the engineer.

### **3.14 CROSSWALK STRIPING, Bid Item No. 13**

- A. Measured by each.
- B. Payment includes pickup and transportation of all material and equipment to and from the construction site(s).
- C. Payment includes all costs and subcontractor costs to remove existing striping and install new striping.
- D. Striping will be paint and glass bead application only, no thermoplastic required.
- E. All existing lines conflicting with new striping must be removed by water blasting or grinding – no blackout or overpaint will be allowed.

### **3.15 RELOCATE PEDESTRIAN EQUIPMENT, Bid Item No. 14**

- A. Measured by each.
- B. Payment includes pickup and transportation of all material and equipment to and from the construction site(s).
- C. Payment includes all removal of the existing pedestrian button/head and cable, including plugging of holes with a permanent, metallic solution (tap/thread/plug, twist-lock plugs, etc.) No duct seal is allowed.
- D. Includes all materials, tools, equipment and labor required to reinstall and reconnect the button/head and cable in its new location.

### **3.16 PEDESTRIAN POLE AND FOUNDATION, Bid Item No. 15**

- A. Measured by each.
- B. State furnished item, to be installed by the contractor.
- C. Payment includes pickup and transportation of all material and equipment to and from the construction site(s).
- D. Payment includes all materials, tools, equipment, labor, and any additional supplies required to excavate a pole foundation hole, frame and pour the foundation, and install a pedestrian pole. This also includes all potholing for utilities and any other work required to identify potential conflicts.

- E. Payment includes all costs, short-load fees, etc. associated with obtaining concrete.
- F. Payment includes removal and disposal of any excess material from construction.
- G. Payment includes restoration of the surrounding landscape and pavement to its previous condition.

**3.17 FULL PEDESTRIAN HEAD ASSEMBLY, Bid Item No. 16**

- A. Measured by each.
- B. Payment includes loading, coordination and delivery to site all state furnished materials, and testing of equipment to verify it is operating correctly.
- C. Payment includes all assembly of the pedestrian head, mounts, and LED's. Includes all materials, tools, equipment and labor required to install the pedestrian head to an existing pole.
- D. Payment includes removal, transportation and disposal of existing pedestrian heads and mounts.
- E. Payment includes additional 4-conductor length, as required. Includes all wiring at the head and cabinet required to make the pedestrian head fully operational.

**3.18 4-CONDUCTOR CABLE, Bid Item No. 17**

- A. Measured by linear foot
- B. Payment includes pickup and transportation of all material and equipment to and from the construction site(s).
- C. Payment includes all materials, tools, equipment and labor required to install new 4-conductor signal cable, meeting IMSA 20-1, in existing conduit, boxes and signal steel.
- D. Payment includes cable termination at the device and in the cabinet, as well as adequate slack in the cabinet, boxes and mast arm.
- E. No additional time or money will be allowed or allotted for difficult cable pulls.

**3.19 RESTORE LANDSCAPING (EXISTING SPRINKLERS, GRADING, TOPSOIL, SOD), Bid Item No. 18**

- A. Measured by lump sum.
- B. Payment includes pickup and transportation of all material and equipment to and from the construction site(s).
- C. Payment includes all labor, materials, equipment and transportation necessary to restore the existing landscaping. Payment includes, but it not limited to, restoring existing sprinklers, installing new topsoil and sod, grading, etc. This item is to comply with project plans and specifications.
- D. In the event that the landscaping cannot be restored within 5 working days due to weather or other circumstances, it will be the responsibility of the contractor to coordinate a solution with the engineer.



**3.20 FLOWABLE FILL, Bid Item No. 19**

- A. Measurement: Measured and paid for on a cubic yard basis as calculated by the engineer, based on concrete truck tickets and field measurements of the depth, width, and length of material placed in the trench.
- B. Payment Covers: Furnishing, placing, and testing of flowable fill (cement treated fill) at utility crossings; providing any needed forms; providing plastic or polyethylene covering/ bond breaker over the area of pipe to be backfilled with flowable fill, and all other work necessary to complete the work associated with this item.
- C. This pay item will NOT be used for bedding material for horizontal elliptical reinforced concrete pipe which is covered under an additive alternate pay item.
- D. This pay item will be used at the discretion of the Engineer in areas where storm drain or sewer pipelines cross under existing buried utilities and mechanical compaction equipment access is limited to prevent proper mechanical compaction of granular fill.
- E. Unit price for this bid item shall be independent of the quantity actually used. No adjustment in price will be allowed for quantities that are significantly more or less than the quantities listed on the Bid Schedule.

**3.21 POWDER COAT PEDESTRIAN POLE, Bid Item No. 20**

- A. Measured by each.
- B. Payment includes pickup and transportation of each 11' Signal/Pedestrian Pole (Bid Item No. 15) to be powder-coated in black in accordance with UDOT Standards.
- C. Payment includes pickup and delivery of each powder-coated 11' Signal/Pedestrian Pole to site where it is to be installed in accordance with the Measurement and Payment description for Bid Item No. 15.

**2.3 CHANGES TO AGREEMENT AND OTHER CONTRACT FORMS**

- A. None

**2.4 CHANGES TO CONDITIONS OF THE CONTRACT**

- A. None

**2.5 CHANGES TO SPECIFICATIONS**

- A. None

**2.6 CHANGE TO DRAWINGS**

- A. Update to Exhibit 1, Sheet SG-9b: Note changed to clarify that Ogden City will provide a separate contractor for reinstallation of the pavers on all corners, as needed for conduit installation, but not for removal of the pavers. Included "POWDER COATED" to note regarding 11' pedestrian signal pole, indicating that the powder coated pole is to be installed at the Southwest corner of Lincoln and 25<sup>th</sup>.

**2.7 CHANGES TO COORDINATION**

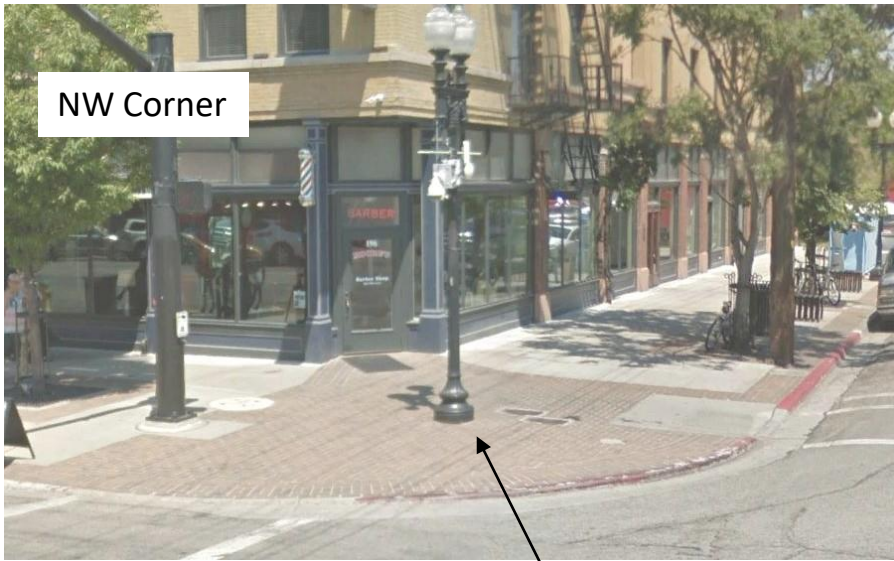
- A. Brick Pavers, Removal and Installation: For work conducted at intersections where

- removal of brick pavers (such as Lincoln & 25<sup>th</sup>) is necessary, removal and salvage of the brick pavers shall be the responsibility of the contractor. It shall be the responsibility of the contractor to return the brick pavers to Ogden City, as directed by the engineer. Ogden City will use a separate sub-contractor to reinstall all brick pavers, at no cost to the contractor associated with this project.
- B. Update to Section 1.8, Public Agencies Personnel to Contact to include Sergeant Cameron Stiver as the primary contact for Ogden Police Department for traffic control support at 801-629-8285 or cameronstiver@ogdencity.com

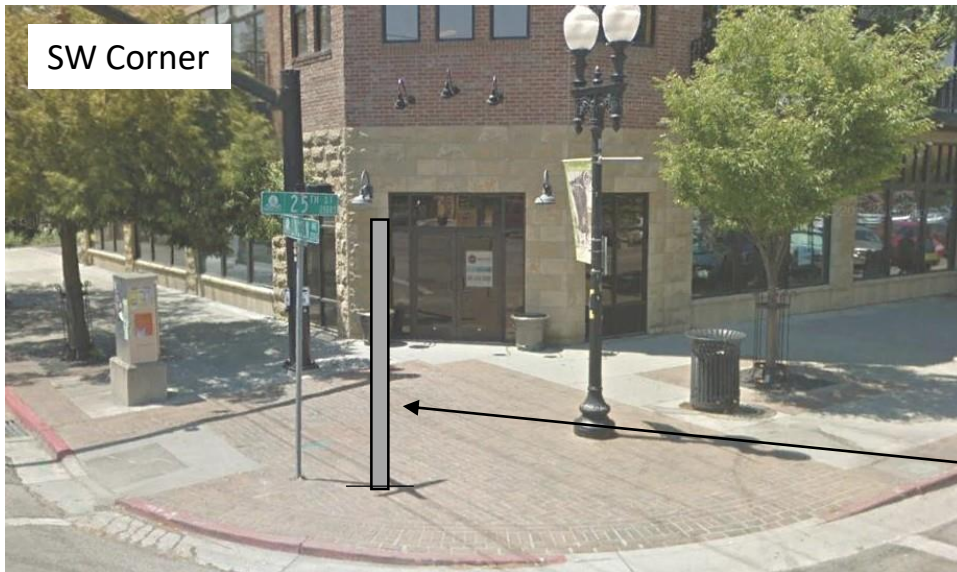
### **PART 3    CLARIFICATIONS**

- A. None

END OF ADDENDUM



Relocate ped buttons to the existing decorative Light posts. Install using standoff brackets if Necessary to achieve clearance between panels.



- Notes:
- Ogdan City will provide a separate contractor for reinstallation of the pavers on all corners, as needed for conduit installation.
  - If relocated buttons on decorative light posts cannot be installed without the panels conflicting, the Contractor will be required to use standoff brackets on one or both panels. Inverted panel installation will not be accepted.

Install 11' **POWDER COATED** ped pole here, relocate ped buttons. Center between the ramps. Standoff brackets are required if necessary. Relocate street signs to this pole and remove post.